



Renault Kangoo

Vehicle instruction manual: in the glove compartment

Fuel: Gasoline E10 / EURO95

Air pressure tires: see information plaque in the doorframe at the driver's side.

Reverse gear:

Pull the ring under the top part of the gear shift up and move the gear shift first to the left and then forwards.



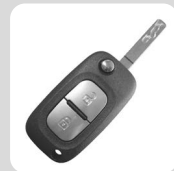
GPS

You can configure the GPS by pressing the house symbol to the left of the multimedia screen, followed by the 'navigation' button. You can also directly touch the map on the start screen.



Contactsleutel

The key is embedded in the remote. Press the button to unfold the ignition key.



Fuel cap

The fuel lid is on the rear passenger side. Depending on the vehicle you open the fuel cap by pulling the exterior cap or by pushing the cap itself.



Handbrake

To lower the handbrake, pull it slightly upwards and push the button on the end. You can lower the brake now. If the handbrake is up while driving, a red signal appears on the console. Immediately lower the handbrake in this case.



Stop & start

This system encourages a lower fuel usage and reduces the amount of emitted greenhouse gasses. It is enabled automatically when the car starts driving. While driving the system shuts down the engine when the car comes to a stop or drives slowly (in a traffic jam, traffic lights, etc..)



Adjust side mirrors

the controls are found on the arm rest of the driver side door. By twisting the left or right button you select the mirror that needs adjusting. Return the button to the centre position when the mirrors are set to your preference.

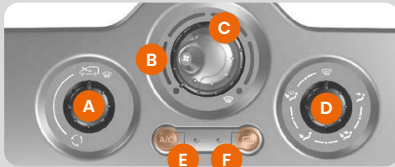


Parking assistance

This car is equipped with rear-facing parking aides. When you drive backwards, a beep will increase in frequency as you approach an object behind you. Make sure to stop in time!



Airco/verwarming



- A. Air recirculation controls
- B. Air temperature controls
- C. Fan speed control
- D. Interior air distribution
- E. Switch on air conditioning
- F. Defrost/defog rear window and heated outer mirrors

Driving assistance functions:



Lane departure warning: Warns you when crossing a dotted or full line without using your turn signal.



Lane keep assist: the lane keep assist executes a corrective action on the steering system if you cross a dotted or full line without using your turn signal.



ECO-modus: The ECO-mode is a function that keeps fuel usage as low as possible. This mode changes certain power-using systems in the car (heating, air conditioning, power steering etc.) and certain driving activities (speeding up, slowing down, shifting gears, use of the speed limiter etc.). Because of the limited acceleration, a driving style is set that is ideal for the inner of outer city, using less fuel in the process. You can switch this off by pressing the ECO-button underneath the control panel.

Window wipers

Front wipers: Push the lever right of the steering wheel upward, to select either of the following modes:

- A. **Off**
- B. **Auto** = turns on automatically when it rains
- C. **Intermittent**
- D. **High speed** (heavy rain)

Special Feature: Each time the vehicle stops, the speed of the windshield wipers decreases. This means they switch from a fast, continuous speed to a slower speed. Once the vehicle starts moving again, the wipers will return to the originally selected speed.

Pull the lever toward you to spray and wipe.



Rear Wiper:

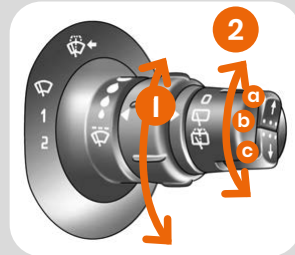
Turn the ring (2) upwards to activate the rear wiper.

You can choose from the following options:

- a. **Off**
- b. **Automatic interval based on speed:** The wiping frequency varies depending on the vehicle's speed.
- c. **Use washer fluid:** Turn the tip of the lever (2) until the symbol is opposite the reference point. When you release the lever, it returns to the rear wiper position.

Special feature:

If the front wipers are operating, the rear wiper is activated intermittently when you reverse.



Lights

turn the selector (1) to choose the type of lighting you wish to use:

Off



Parking light



Low beam



headlights: Push the lever to switch between low beams and headlights. To return to low beam, pull the lever towards you.

Automatic: To switch this function on or off, the ignition needs to be on and the vehicle must be standing still. Press the button (2) for four seconds. A message will appear on the dashboard that it is turned on.

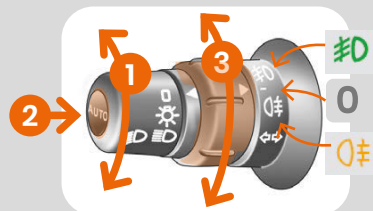
fog lights



Front: The dimming or urban lights have to be turned on. Turn the central ring (3) up once and release. An indicator light will appear on the dashboard.




Rear: the fog lights at the front and the dimming lights have to be turned on. turn the middle ring (3) upward to activate the rear-facing fog lights. A second light will appear on the control panel. You can turn this off by moving that same ring to 0.



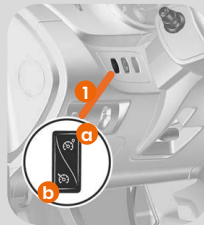
Speed Limiter

The speed limiter (a) is a function that prevents you from exceeding a chosen driving speed, called the speed limit. Activate this function by pressing the top of the main switch (1). Press the switch (1) that can be found on the back left side of the steering wheel.

Press switch (1) located at the rear left side of the steering wheel. The warning light  will illuminate in orange on the dashboard, and the message «speed limit» will appear, along with dashes, to indicate that the speed limiter is activated and waiting for a limit speed to be set. To register the current speed, press switch (2) (+). The limit speed will replace the dashes. The minimum speed is 30 km/h.

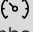
Controls:

1. Main on/off switch.
2. Activate, save, and increase the set speed (+).
3. Decrease the set speed (-).
4. Standby mode (retaining the set speed) (O).
5. Activation with recall of the stored set speed (R).



Cruise Control

The cruise control (b) is a function that allows you to maintain a constant speed that you have selected while driving. Activate this function by pressing the bottom of the main switch (1).

Press switch (1) located at the rear left side of the steering wheel. The light will illuminate green, and the message  «Cruise control» will appear on the dashboard, along with dashes, indicating that the control function is active and waiting for a set speed to be established. At a stable speed (averaging above 30 km/h), press switch (2) (+); the function will be activated, and the current speed will be stored.

Spare wheel

The spare wheel is chained to a rack under the car. The tools and jack can be found behind the panel in the front passenger's footwell.

To remove the spare wheel:

1. Open the trunk door.
2. Loosen screw (5) with the wheel wrench (1).
3. Unhook the rack using the handle (3).
4. Take out the spare wheel (2).

To store the wheel in the rack:

1. Place the damaged wheel in the rack.
2. To return the rack to its original position, reverse the procedure and tighten the screw using the wheel wrench.

