



CITROËN C3 2024

Vehicle instruction manual: in the glove compartment

Fuel: Gasoline E10 / EURO95

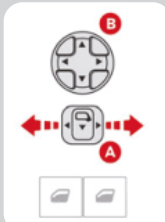
Tyre pressure: see sticker on the pillar of the driver's door

Adjust side mirrors

The controls are on the driver's door:

- A. Select left or right mirror
- B. You can then adjust the mirror in all directions.

Please move the switch back to its neutral position after adjusting.



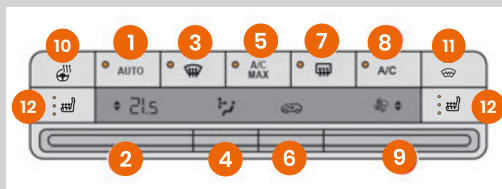
Reverse gear



Pull up the ring on the gear lever and move up left.

Air conditioning/Heating

- 1. Automatic mode for temperature, airflow, and air distribution
- 2. Desired temperature
- 3. Defrost/demist the windshield
- 4. Air distribution adjustment
- 5. Air conditioning on MAX
- 6. External air intake or air recirculation (e.g., in tunnels)
- 7. Rear window heating
- 8. Air conditioning activation
- 9. Ventilation intensity

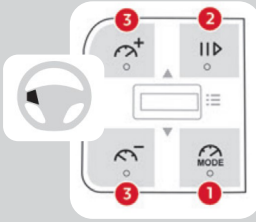


- 10. Steering wheel heating
- 11. Windshield heating (in case of frost)
- 12. Driver and passenger seat heating

Start-Stop Function

When this feature is activated, the engine automatically turns off when you stop and restarts when you press the clutch pedal. To enable or disable again this function, press the @ button located on the left side of the steering wheel, below the air vents.

Cruise control & Speed limit



Located on the left side of the steering wheel.

1. Select the cruise control or speed limiter MODE.
2. Start/pause the speed limiter or cruise control with the stored speed.
3. Increase/decrease the set speed.

Center switch: navigate through the instrument panel menus/ settings.

The cruise control settings are displayed on the dashboard. See car manual for detailed instructions.

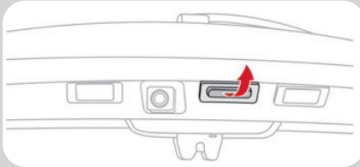
Handbrake



To **release the handbrake** pull the lever up slightly and push the **button at the end**. You can then **lower the handbrake lever**. If the handbrake is engaged **whilst riding**, a red warning sign lights up on the dashboard. **Release the handbrake immediately!**



Open the boot



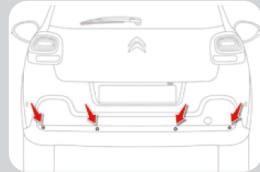
After unlocking the vehicle, you will find a button to the right of the rearview camera, under the trunk lid.

GPS (touch screen)



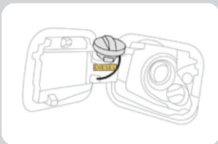
To start the GPS function tap the icon button on the left of the screen. Tap the magnifying glass icon to enter an address.

Park assist



This vehicle features a **park assist system in the rear**. When in reverse gear, a buzzer will beep faster as you get closer to an obstacle. Visual cues will be displayed on the screen near the central console. Be sure to **brake in time!**

Fuel cap (always use gasoline **EURO95/E10**)



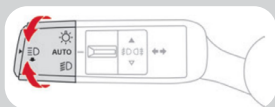
On the driver's side at the back. You can place the cap in the dedicated holder on the fuel lid while fuelling.

12 Volt socket

It is located in the center of the car, between the passenger and the driver.



Headlights/Fog lights



Headlights rotate the dial at the end of the lever left of the steering wheel to select the correct setting:



Automatic



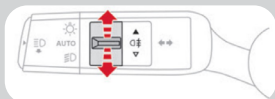
Parking lights only



Headlights



Pull the lever towards you (in headlights setting) to operate the high beams.



Fog lights rotate the dial one click forward/upward to turn on the front fog lights.

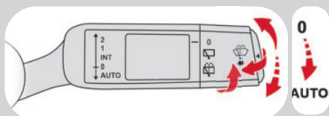


Front: By pushing the handle up once.



Rear: By pushing the handle up a second time.

Window wipers



Push the lever right of the steering wheel upward, to select either of the following modes.

Front wipers:

2 = high speed (heavy rain)

1 = normal speed (moderate rain)

I = intermittent

0 = off

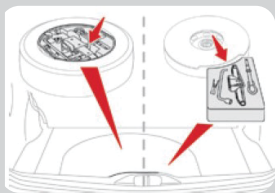
Auto = turns on automatically when it rains

Pull the lever **toward you** to spray and wipe.

Rear wipers:

Rotate the dial forward one click to operate the rear wipers (intermittent). Rotate the dial another click forward to spray and wipe.

Spare wheel



The spare wheel is stored **under the boot floor**, along with a **jack and wheel wrench**. See instruction manual for further instructions.

SOS button



Please **refrain from using the SOS button or the assistance button** on the dashboard. In case of an emergency, this function automatically notifies the emergency services. If it is not an emergency, it is better to contact the (cambio) center yourself in case of a breakdown or accident.